

SEPDISP04

Kit supplied

Modification instructions for
Alfa Romeo 156/147 display

Ver. 3.0



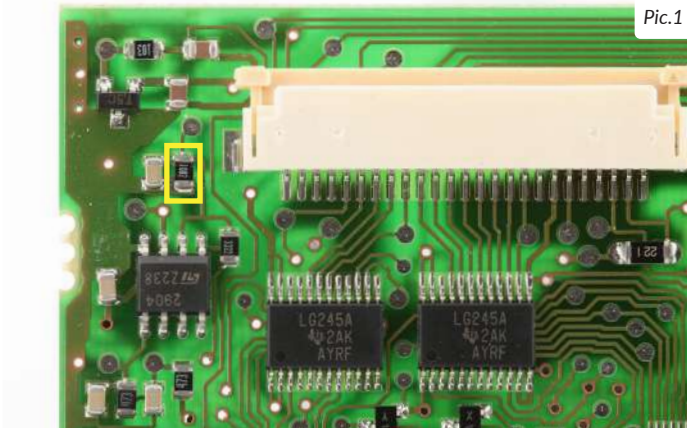
ALFA ROMEO 156 INFOCENTER (page 2)



ALFA ROMEO 147 CAR RADIO/SAT NAV (page 3)

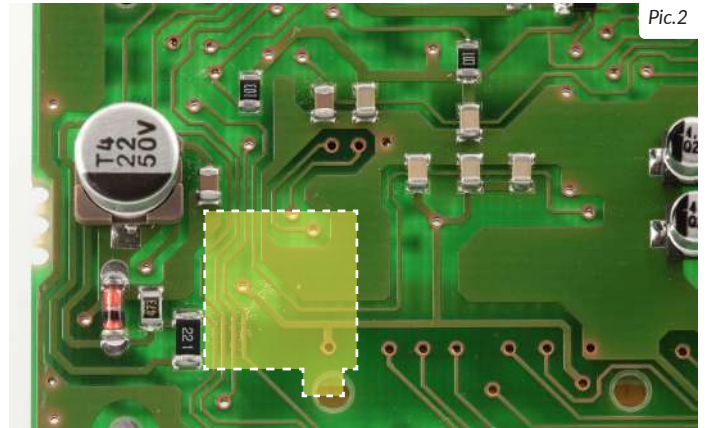
WARNING: THE FOLLOWING OPERATIONS ARE RECOMMENDED TO QUALIFIED STAFF ONLY.

1



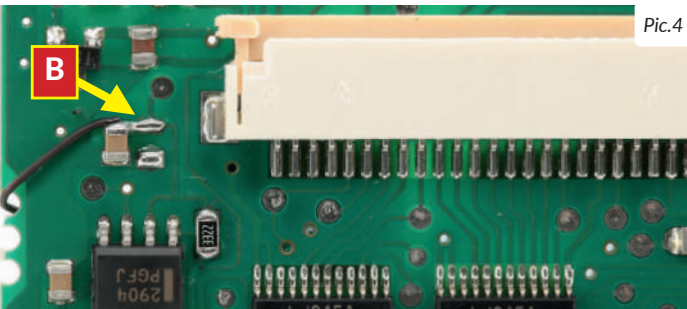
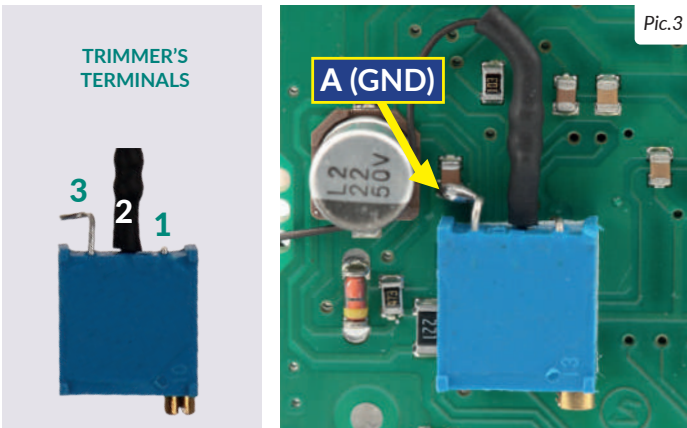
After removing the original display, remove the resistor highlighted in picture 1.

2



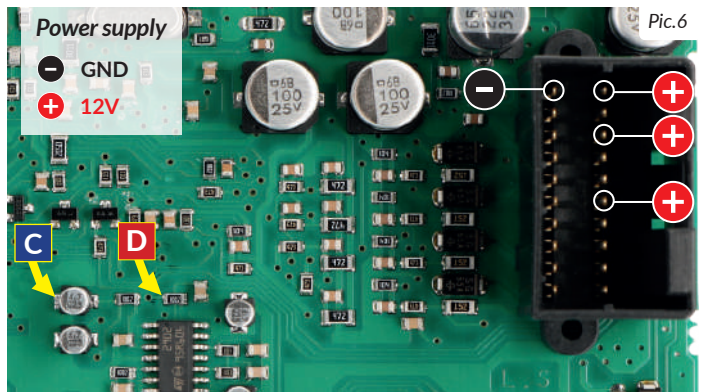
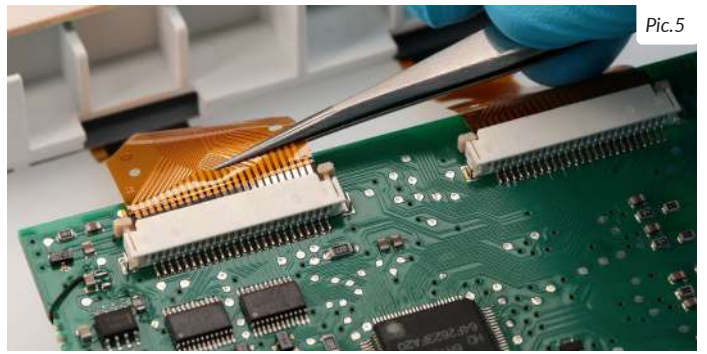
Position the trimmer (supplied with the kit) in the area indicated in picture 2, securing it with the double-sided adhesive tape on its back.

3



Solder trimmer terminal 3 to point A (GND) (pic.3) and install a jumper between terminal 2 and point B, placed on the back of the board (pic.4).

4



Connect the new Minitools display as in picture 5. Switch on the infocenter and position the multimeter probes on points C and D shown in picture 5 in order to measure the voltage.

5



With the probes in place, adjust the voltage acting on the trimmer wheel until it reaches approximately 13.0V.

6

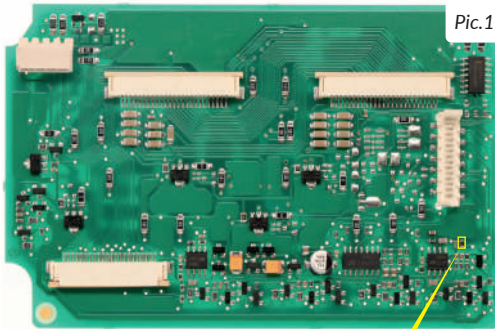


Once the indicated voltage is reached, check if the display is sharp.

If not, act again on the trimmer wheel until the required sharpness is reached.

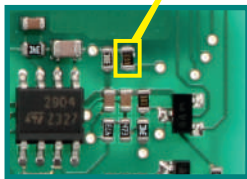
WARNING: THE FOLLOWING OPERATIONS ARE RECOMMENDED TO QUALIFIED STAFF ONLY.

1

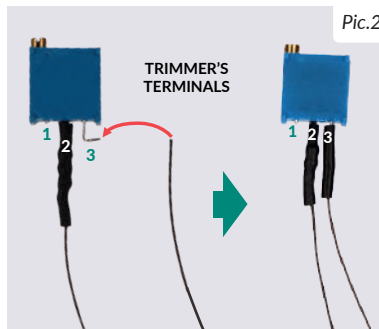


Pic.1

After removing the original display, **remove the resistor** highlighted in picture 1.



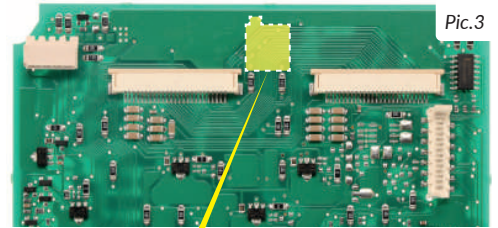
2



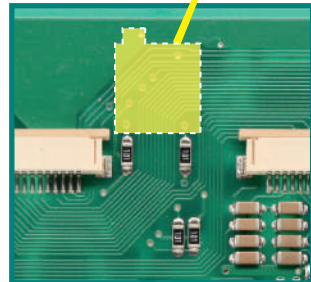
Pic.2

Solder the cable supplied with the kit (picture 2) to terminal 3 of the trimmer and insulate with its heat shrink sleeve.

3

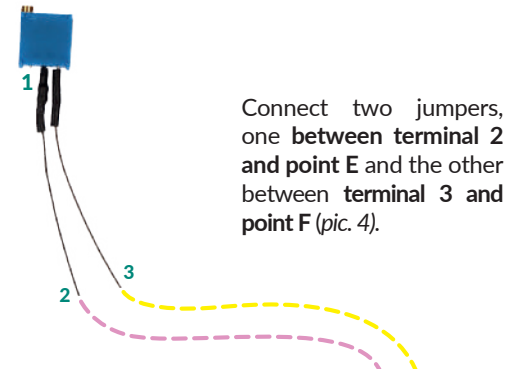


Pic.3

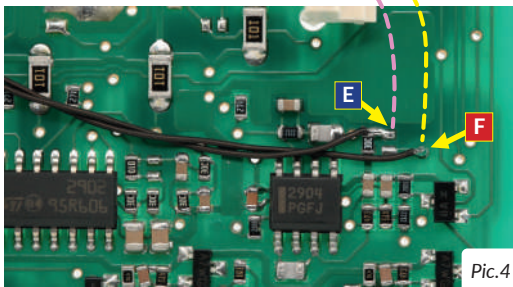


Position the trimmer in the area shown in picture 3 and secure it with the double-sided adhesive tape on the back.

4

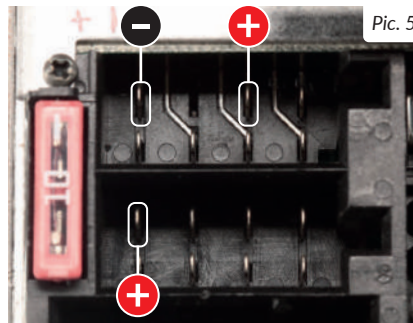


Connect two jumpers, one **between terminal 2 and point E** and the other **between terminal 3 and point F** (pic. 4).



Pic.4

5



Pic.5

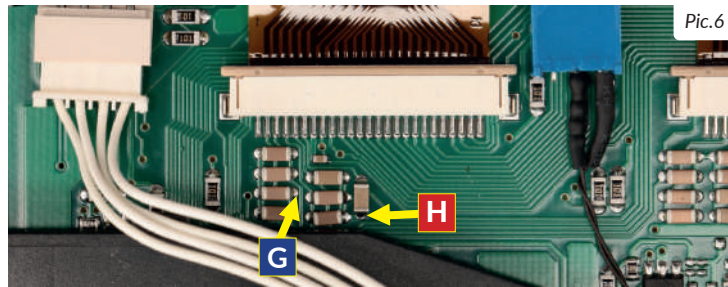
Connect the new Minitools display.

Switch on the stereo/sat nav (picture 5) and **measure the voltage** positioning the multimeter probes on **points G and H** indicated in picture 6.

Power supply

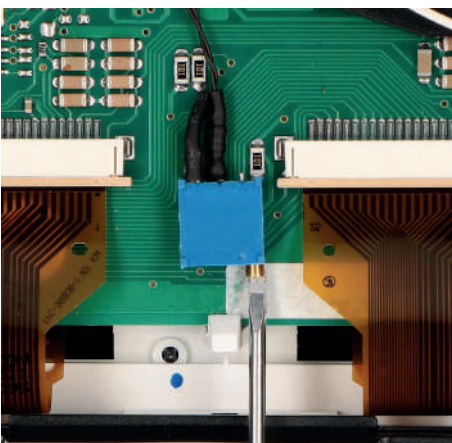
⊖ GND

⊕ 12V



Pic.6

6



With the probes in place, **adjust the voltage** acting on of the trimmer wheel until it reaches **approximately 14.8V**.

7



Once the indicated voltage is reached, **check if the display is sharp**.

If not, act again on the trimmer wheel until the required sharpness is reached.