

minitools



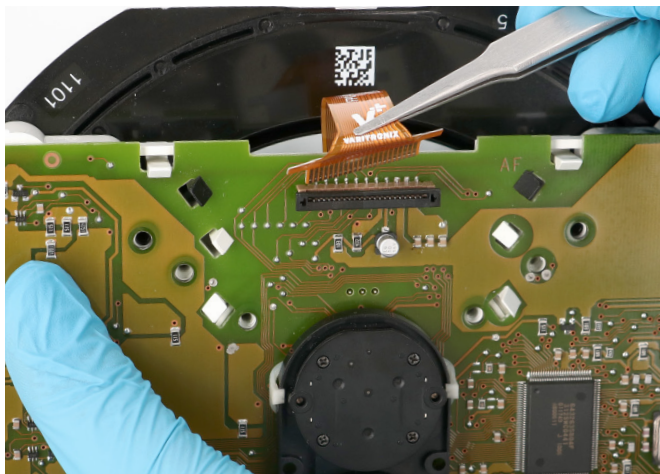
- **SEPDISP66V4**
- **SEPDISP66V9**
- **SEPDISP66V12**
- **SEPDISP66V13**

Istruzioni di montaggio

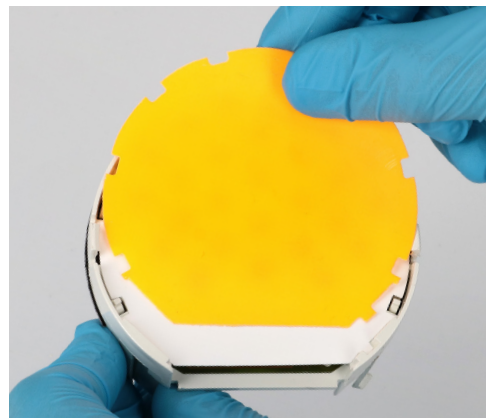
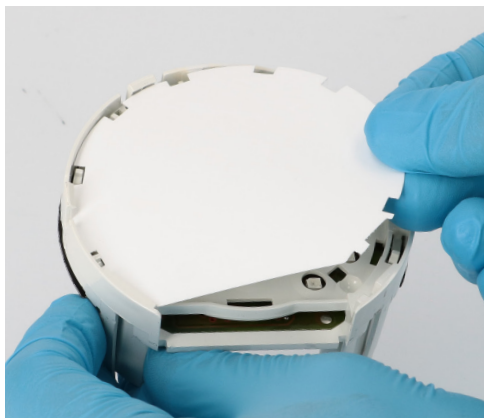


Ver. 1.1

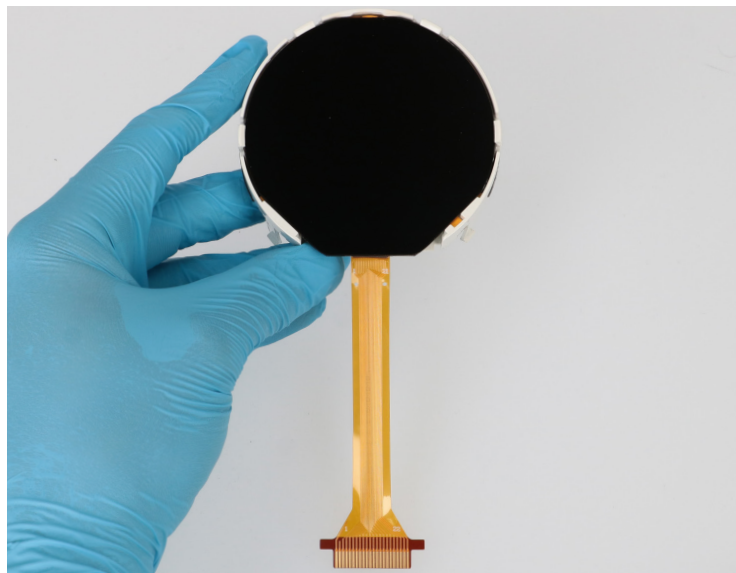
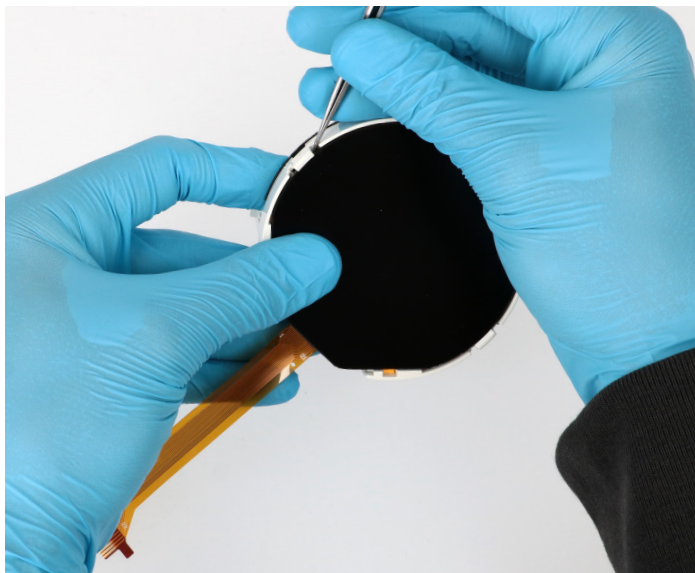
www.minitools.it

ATTENZIONE: QUESTE ISTRUZIONI SONO VALIDE SOLO PER I DISPLAY SEPDISP66V4, SEPDISP66V9, SEPDISP66V12 E SEPDISP66V13**1**

Disassemblare il quadro strumenti e rimuovere il display difettoso.

2

Al di sotto del diffusore di backlight arancione, inserire quello bianco fornito con il display Minitools.

3

Installare il display Minitools.