

SEPDISP46A
SEPDISP46B
SEPDISP46BV2
SEPDISP46C
SEPDISPKIT-46A-B-C
SEPDISPKIT-46A-B-C-V2

Installation instructions

Ver. 3.0



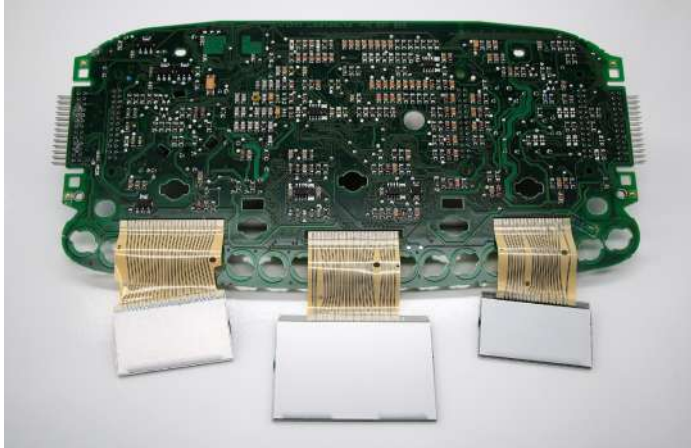
WARNING

Before installing the new displays, please read carefully the following instructions. Our technicians, for illustrative purposes only, have made a video tutorial about how to install the displays. Click on <https://video.minitools.com/SEPDISP46-en> or scan the QR code to watch it. **DO NOT SKIP ANY STEP.**



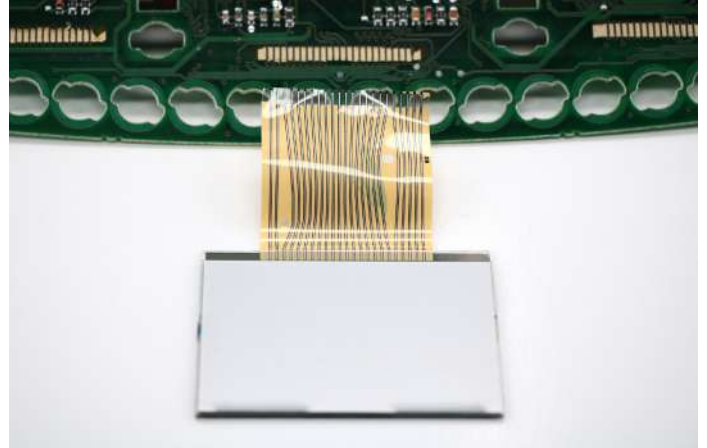
NOTE: It is highly recommended replacing the three displays even if not all of them have defects. This prevents display differences between the LCDs and the quality will be improved.

1



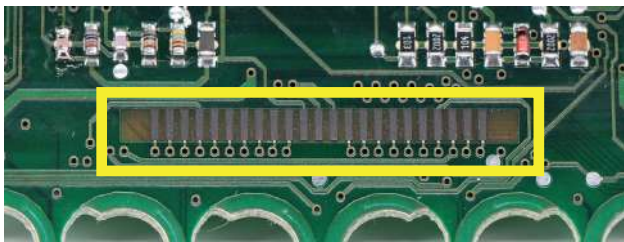
Open the instrument cluster and reach the motherboard.

2



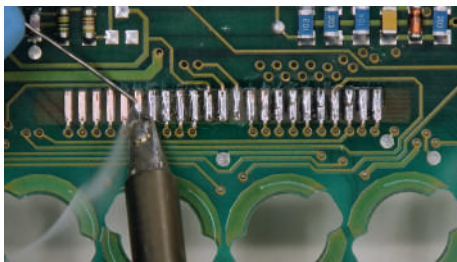
Detach the flat of the original display from the motherboard by simply pulling it away.
Clean the contacts with a specific product (e.g. solvent).

3



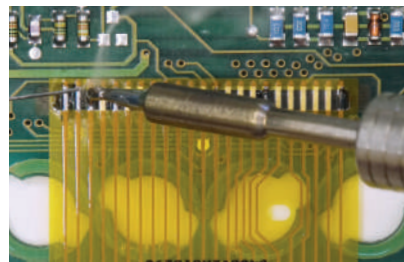
You will notice that the contacts on the motherboard are covered with a graphite patina. To perfectly solder the FPC of the new display, the patina has to be carefully removed with a scraper.
Clean any residues with some solvent.

4



To properly solder the new display, add some solder wire on the contacts and remove any excess with the desoldering braid.

5



Solder the FPC pins on the board one at the time with a soldering iron with conical tip at 350°C.

WARNING: using flux is not recommended to inexperienced staff, as misusing it may damage the board irreversibly.

6



NOTE: the same procedure has to be repeated for all displays to replace.

Once all operations have been carried out, reassemble the instrument cluster.